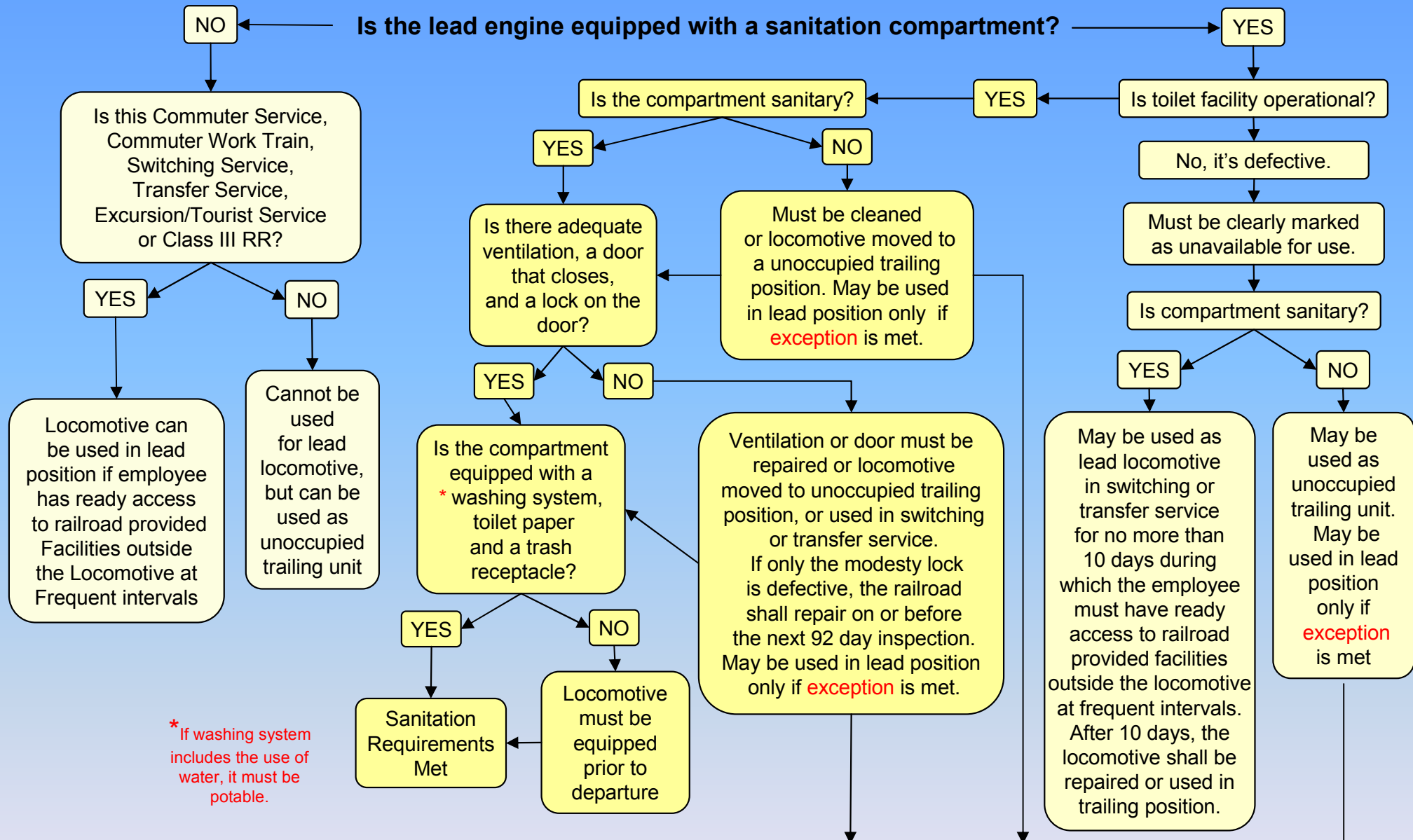


Locomotive Daily Inspection Cab Sanitation Guide



* If washing system includes the use of water, it must be potable.

EXCEPTION

If the locomotive is determined to be unsanitary or defective or both, it shall not be used in the lead position unless all of the following conditions have been met.

1. There is no way to switch, replace, clean or repair the locomotives at it's current location.
2. While non-compliant, the locomotive did not pass by a location where it could have been cleaned, repaired, or switched.
3. The railroad arranges for access to a suitable facility outside the locomotive.
4. The door to the facility is closed and adequate ventilation is provided to the cab.
5. Repairs or replacement with a compliant unit must be made at the next available location or no later than the next daily inspection, whichever comes first.